



ASKING PRICE

£475,000

Curchin Close

Westerham, TN16 3GF

PROPERTY SUMMARY

This modern, tastefully decorated three bedroom, two bathroom mid terrace townhouse is situated on the popular gated development of Leavesden, in a quiet and peaceful turning, offering plenty of space including a lounge/diner overlooking a low maintenance garden, a downstairs cloakroom along with bedroom and en suite to the top floor and off street parking. Biggin Hill is surrounded by greenbelt countryside with some wonderful walks. Access to local school's, transport and a number of restaurants and shops which include a Waitrose and a Tesco Express. Orpington and Bromley town centres are nearby.

3

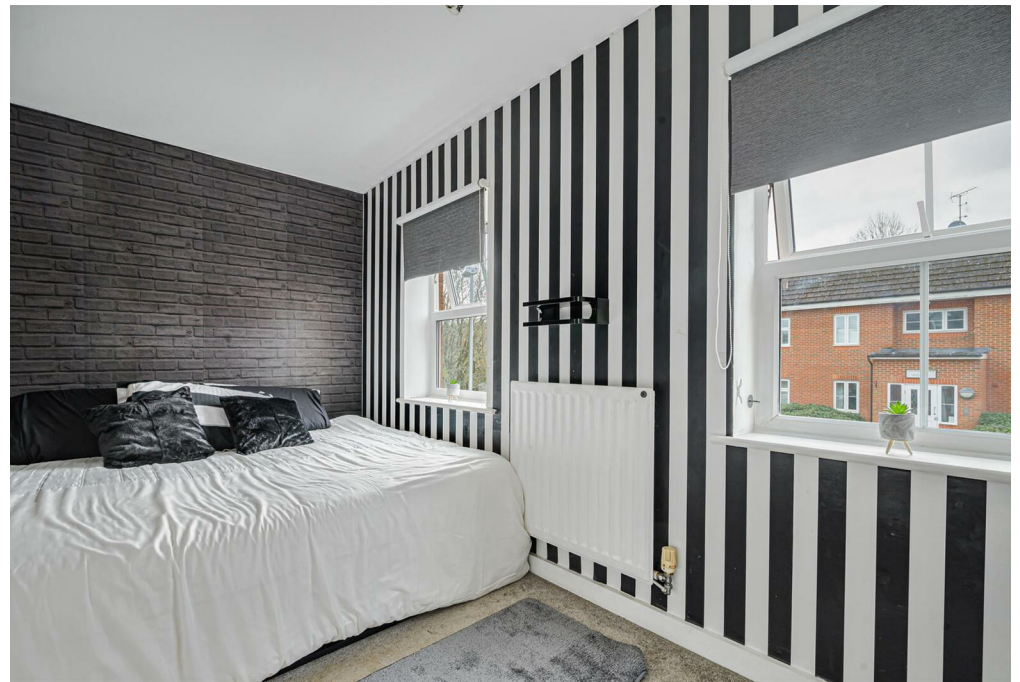


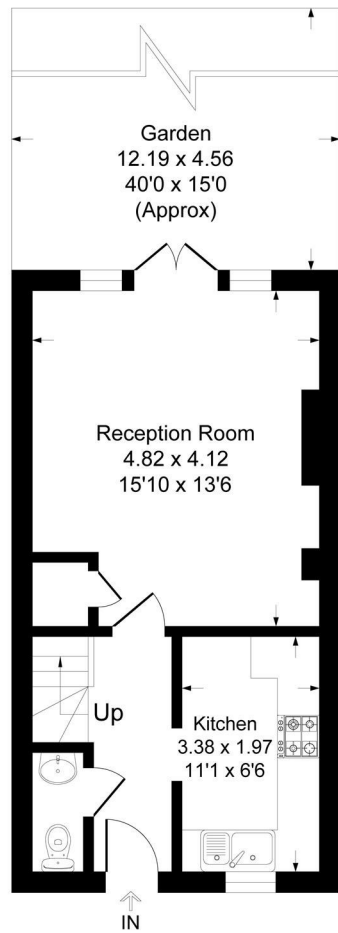
2



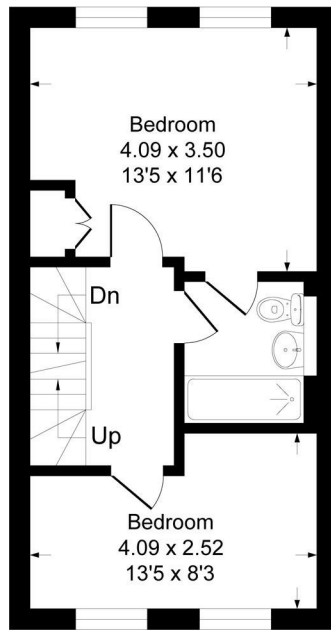
1



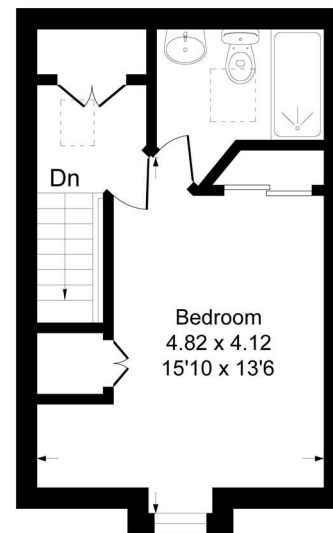




Ground Floor



First Floor



Second Floor

Curchin Close

Approximate Gross Internal Area 96.2 sq m / 1036 sq ft



This plan is for layout guidance only. Not drawn to scale unless stated. Windows and door openings are approximate. Whilst every care is taken in the preparation of this plan, please check all dimensions, shapes and compass bearings before making any decisions reliant upon them.
Produced By Planpix

LOCAL AUTHORITY

TENURE

Freehold

EPC RATING

C

COUNCIL TAX BAND

E

VIEWINGS

By prior appointment only

Energy Efficiency Rating		Current	Potential
<i>Very energy efficient - lower running costs</i>			
(92 plus) A			
(81-91) B			
(69-80) C		77	81
(55-68) D			
(39-54) E			
(21-38) F			
(1-20) G			
<i>Not energy efficient - higher running costs</i>			
England & Wales		EU Directive 2002/91/EC	

Agents Note: Whilst every care has been taken to prepare these particulars, they are for guidance purposes only. All measurements are approximate and are for general guidance purposes only and whilst every care has been taken to ensure their accuracy, they should not be relied upon and potential buyers/tenants are advised to recheck the measurements



OFFICE ADDRESS

1&2 The Grange
Westerham
Kent
TN16 7AH

OFFICE DETAILS

01959 587 460
infowh@sinclairhammelton